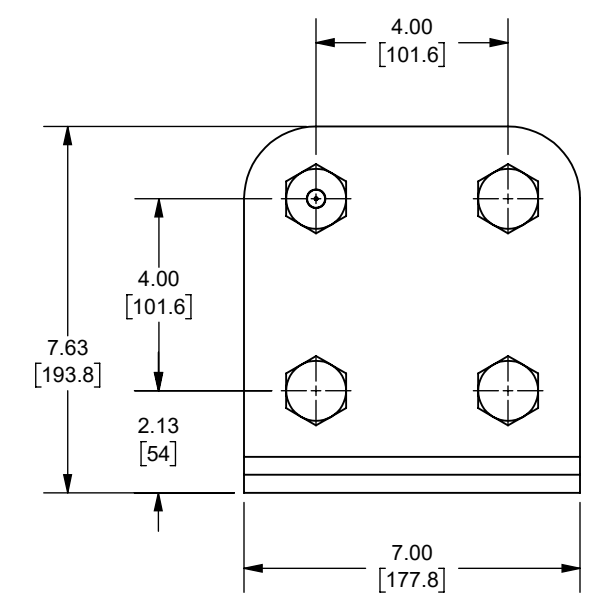
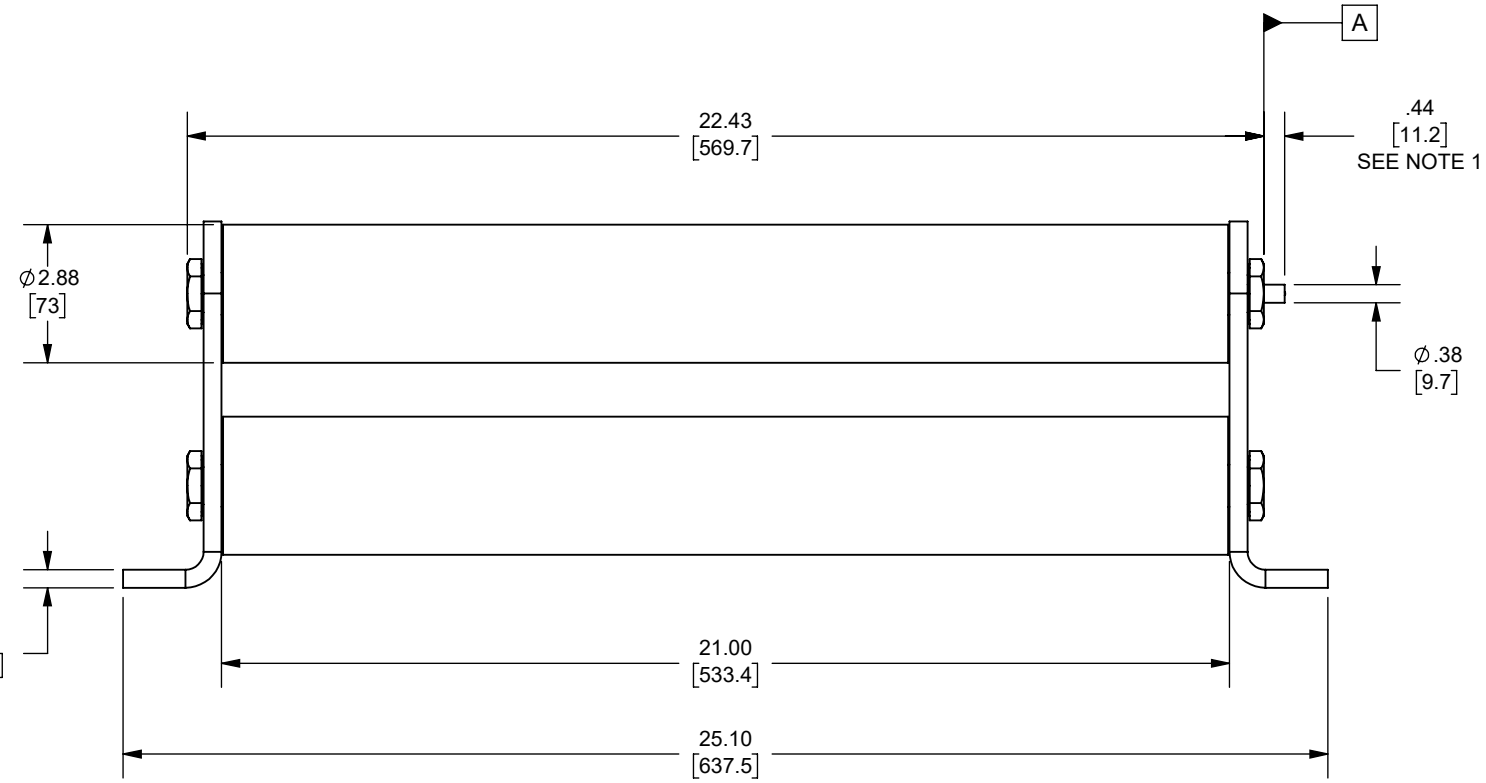
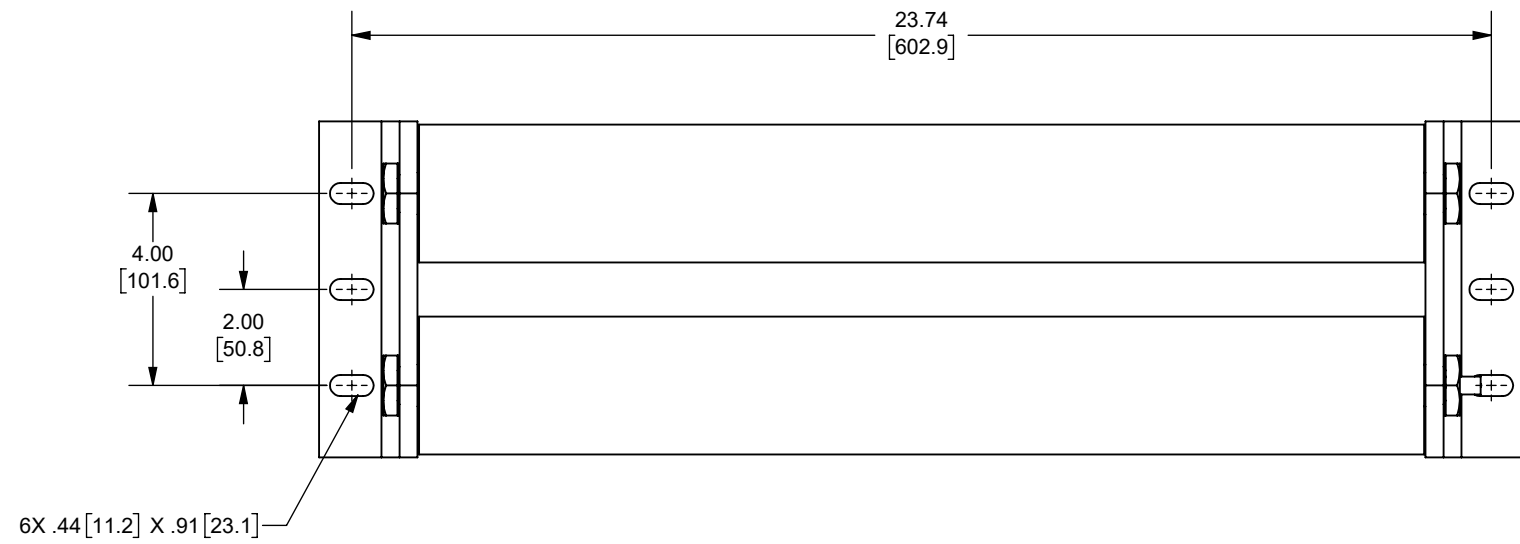


REV.	DATE	ECO	DESCRIPTION	BY	CK	APP
-	4/28/2006	N/A	INITIAL RELEASE	LDB	N/A	N/A
B	1/24/2024	18032	REDRAWN FROM CADRA, UPDATED TITLE BLOCK, ADDED NOTES, DIM .44[11.2] WAS .50[12.7], 1 LBS FORCE WAS 2 LBS FORCE	YF	N/A	SEE ECO



OUTLINE DIMENSIONS  
NOT TO BE USED FOR PRODUCTION  
DIMENSIONS IN [ ] ARE MILLIMETERS

NOTES:

- INDICATOR IS FLUSH WITH SURFACE [A] BEFORE FUSE OPENS  
INDICATOR EXTENDS .44 IN. [11.2mm] AFTER FUSE OPENS AND EXERTS AN 1 LBF AT THE END OF TRAVEL

Approval stage / Etat d'approbation: <b>APPROUVÉ POUR FABRICATION / APPROVED FOR MANUFACTURING</b>	Product Class:/ Product Type: <b>MEDIUM VOLTAGE R-RATED</b>	Product amp rating:/ Voltage rating: <b>32-38X 15.5kV</b>	Initial ECO / ECO initiale: <b>ECO-18032-000</b>	Title / Titre: <b>OUTLINE</b>	Weight / Masse:
Draw by / Dessiné par: <b>Yadyra Fang</b>	Date: <b>6/14/2024</b>	Drawing / de dessin: <b>701124</b>		Rev / Rév: <b>B</b>	
Checked by / Vérifié par: <b>Luis ARMENTA</b>	Date: <b>6/14/2024</b>	Part / Article: <b>SEE TABLE</b>	Page: <b>1/1</b>	<b>MERSEN</b>	
Electrical Power 374 MERRIMAC STREET NEWBURYPORT, MA 01950	Éch / Scale: <b>1:4</b> Format / Size: <b>B</b>	Ce plan strictement confidentiel est la propriété exclusive de la société MERSEN sans l'autorisation écrite de laquelle il ne peut être ni reproduit, ni copié, ni communiqué à des tiers. This drawing and specifications there on is property of MERSEN and shall not be reproduced or copied or used in whole or in part as the base for manufacture or sale of item without written permission.			

A155B4D0R0-38X  
A155B4D0R0-32X  
CATALOG NUMBER