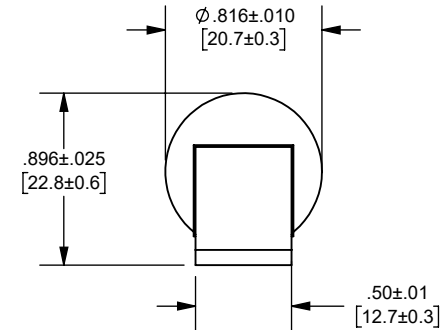


REV.	DATE	ECO	DESCRIPTION	BY	CK	APP
B	3/13/2023	17393	UPDATED FORMAT, ADDED MDC07A(70-175)S	ABT	N/A	SEE ECO
C	8/28/2023	17758	REMOVED MEV70(70-175)-S	ABT	N/A	SEE ECO



OUTLINE DIMENSIONS
NOT TO BE USED FOR PRODUCTION

DIMENSIONS IN []
ARE MILLIMETERS

<i>Approval stage / Etat d'approbation:</i> APPROUVÉ POUR FABRICATION / APPROVED FOR MANUFACTURING		Product Class:/ Product Type: DC DISTRIBUTION FUSE	
<i>Initial ECO / ECO intiale:</i> ECO-17393-000		Product amp rating:/ Voltage rating: 70 - 175A 700VDC/600VAC	
<i>Draw by / Dessiné par:</i> Alma Balcazar		Date : 9/6/2023	
<i>Checked by / Vérifié par:</i> Yadyra Fang		Date : 9/6/2023	
Electrical Power 374 MERRIMAC STREET NEWBURYPORT, MA 01950		Éch / Scale : 1:1 Format / Size : A	
Title / Titre: OUTLINE MDC07A(70-175)S		Weight : Masse :	
Drawing / de dessin: 702154		Rev : C Rév :	
Part / Article: SEE TABLE		Page : 1/1	

MDC07A175S
MDC07A160S
MDC07A150S
MDC07A125S
MDC07A100S
MDC07A80S
MDC07A70S
CATALOG NUMBER

Ce plan strictement confidentiel est la propriété exclusive de la société MERSEN sans l'autorisation écrite de laquelle il ne peut être ni reproduit, ni copié, ni communiqué à des tiers.
 This drawing and specifications there on is property of MERSEN and shall not be reproduced or copied or used in whole or in part as the base for manufacture or sale of item without written permission.

