

# PCS

## Semiconductor PC Mount Fuses

### MIDGET, PC MOUNT & MINIATURE FUSES

## SEMICONDUCTOR PROTECTION FUSES FOR DIRECT MOUNTING ON PRINTED CIRCUIT BOARDS



Mersen's PCS series of extremely fast-acting, direct-mountable fuses address the increasing need for electrical protection at the PC board as current and voltage requirements push higher. These fuses help printed circuit board manufacturers reduce parts by eliminating clips and fuse blocks and allowing automated assembly. PCS fuses are AC and DC rated and are extremely current-limiting. They will protect semiconductors, main frame boards, circuit breakers with low interrupting rating and other critical components. PCS fuses bring I<sup>2</sup>t protection, higher voltage and interrupting ratings to the board itself and are UL Component Recognized.

### CATALOG NUMBERS (AMPS)

Slot Mount		Double Hole Mount		Surface Mount	
PCS5-R	PCS20-R	PCS5-H	PCS20-H	PCS5-S	PCS20-S
PCS8-R	PCS25-R	PCS8-H	PCS25-H	PCS8-S	PCS25-S
PCS10-R	PCS30-R	PCS10-H	PCS30-H	PCS10-S	PCS30-S
PCS12-R	PCS35-R	PCS12-H	PCS35-H	PCS12-S	PCS35-S
PCS15-R	PCS40-R	PCS15-H	PCS40-H	PCS15-S	PCS40-S

### WATTS LOSS DATA

Ampere Rating	Watts Loss @ 80% Rating (w)	Watts Loss @ 100% Rating (w)
5	0.5	0.7
10	0.9	1.5
15	1.9	3.0
20	2.6	4.4
25	2.9	5.3
30	3.0	5.8
35	3.3	6.4
40	3.6	7.0

### RATINGS:

- **Volts:** 600VAC / DC
- **Amps:** 5 to 40A
- **I.R.:** 200kA I.R. AC; 100kA I.R. DC
- **L/R:** ≤10ms

### HIGHLIGHTS:

- Extremely fast-acting
- PC board mount
- Three mounting styles

### APPLICATIONS:

- Protection of semiconductors, circuit breakers, critical components

### APPROVALS:

- UL Recognized Components File E60314



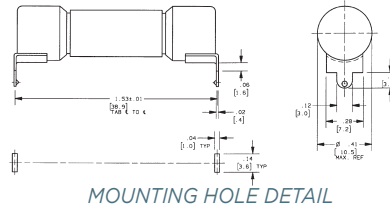
### I<sup>2</sup>T DATA, 100KA

Ampere Rating	600VAC		600VDC L/R =10ms
	Melting I <sup>2</sup> t (A <sup>2</sup> s)	Clearing I <sup>2</sup> t (A <sup>2</sup> s)	Clearing I <sup>2</sup> t (A <sup>2</sup> s)
5	5	60	40
8	6.5	70	42
10	10	110	70
12	17	150	90
15	26	180	110
20	41	330	200
25	69	440	260
30	132	860	520
35	197	1300	780
40	276	1800	1100

© 2024 Mersen. All rights reserved. Mersen reserves the right to change, update, or correct, without notice, any information contained in this datasheet.

**OUTLINE DIMENSIONS**

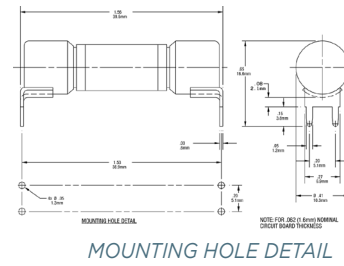
**Slot Mount (Rectangular Holes)**



PCS5-R thru PCS40-R

FOR .062 (1.6) NOMINAL  
CIRCUIT BOARD  
THICKNESS

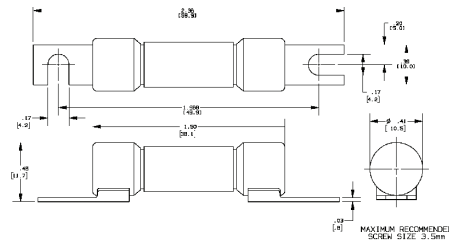
**Double Hole Mount  
(Round Holes)**



PCS5-H thru PCS40-H

FOR .062 (1.6) NOMINAL  
CIRCUIT BOARD  
THICKNESS

**Surface (Screw) Mount**



PCS5-S thru PCS40-S

MAXIMUM RECOMMENDED  
SCREW SIZE 3.5MM