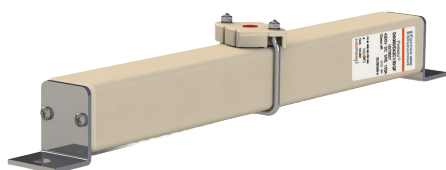


Protistor® size 600 aR

3500 to 4200VDC

SEMICONDUCTOR PROTECTION FUSES

SQUARE BODY HIGH-SPEED FUSE-LINKS DC PROTECTION



Mersen DC high performance power fuses were developed to provide superior protection for railway power circuits.

These fuse-links are typically operated at more elevated temperatures than other fuse types.

They have lower I^2t to minimize damage to components in case of short circuits, and have lower watts loss and longer life.

TECHNICAL DATA OVERVIEW

Voltage Range DC	3500V-4200 VDC
Ampere Range (A)	10...150A
Speed/Characteristic	aR
Product Size	600
Weight	1,92kg
Package	1

FEATURES & BENEFITS

- Extremely fast acting
- Current limiting
- Very low I^2t
- Worldwide acceptability
- Superior cycling ability

APPLICATIONS

- Suburban lines: 3kVDC

Protistor® size 600 aR

3500 to 4200VDC

PRODUCT RANGE

Bracket size 600 aR (SRB) 3500V to 4000V

Catalog number	Item number	Rated voltage DC	Rated current I_n	Pre-arcing I^2t	Watt Loss @ $0,8I_n$	Watt Loss @ I_n	Max. Interrupting Rating IR @ Rated Voltage, L/R=25ms
D600SB35C10QF	E089405	3500 V	10 A	25 A ² s	5,4 W	12 W	60 kA
D600SB35C16QF	F089406	3500 V	16 A	58 A ² s	8,1 W	18 W	60 kA
D600SB40C20QF	G086946	4000 V	20 A	103 A ² s	10,4 W	23 W	60 kA
D600SB40C25QF	H086947	4000 V	25 A	154 A ² s	13,1 W	29 W	60 kA
D600SB40C32QF	J086948	4000 V	32 A	250 A ² s	16,2 W	36 W	60 kA



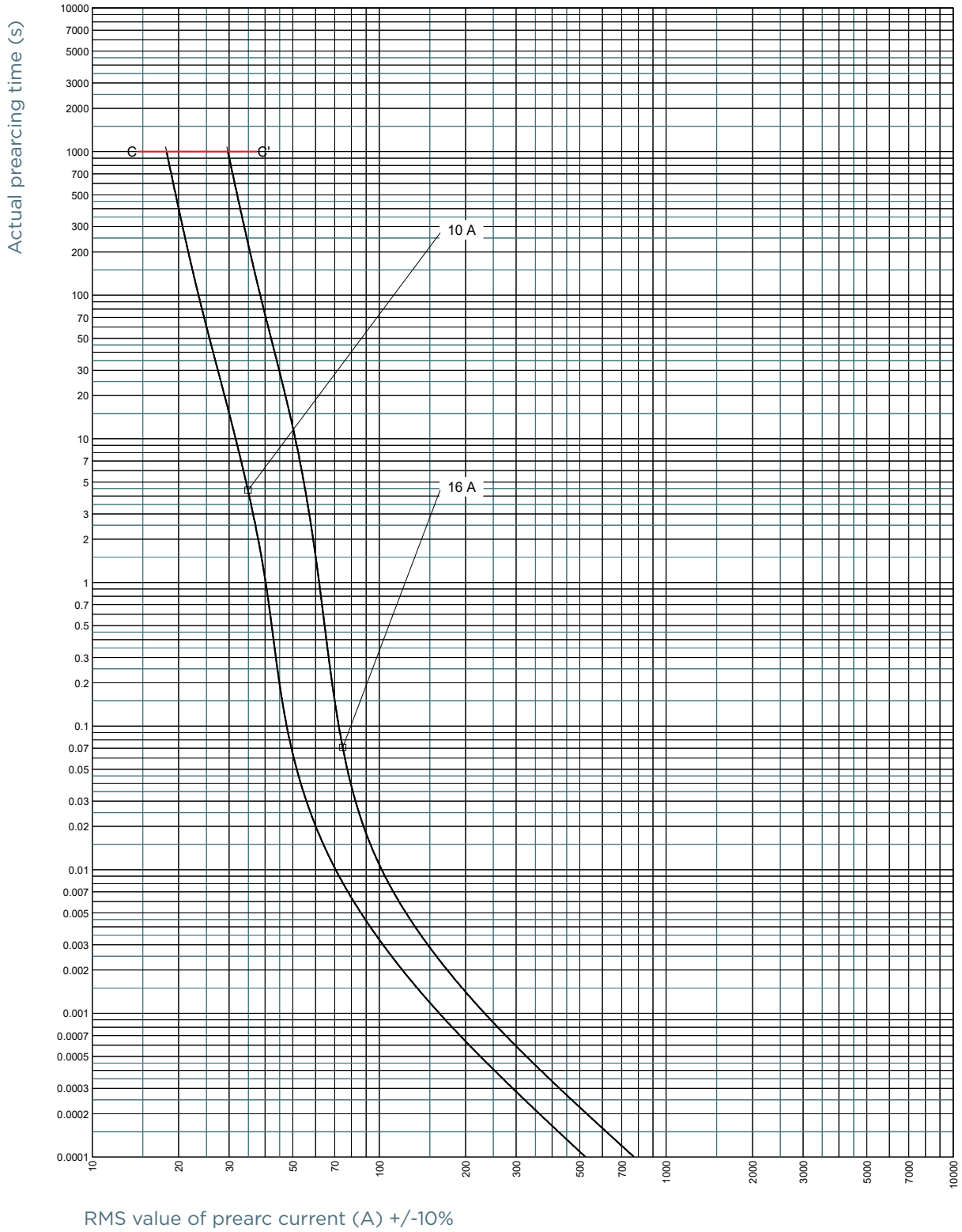
D600SE42C150QF

Bracket size 600 aR (SRE) 4200V

Catalog number	Item number	Rated voltage DC	Rated current I_n	Pre-arcing I^2t	Clearing I^2t @ 3500V, L/R=15ms	Clearing I^2t @ 3500VDC, L/R=45ms	Watt Loss @ $0,8I_n$	Watt Loss @ I_n	Max. Interrupting Rating IR
D600SE42C40QF	C079490	4200 V	40 A	87 A ² s	480 A ² s	850 A ² s	50 W	100 W	60 kA @ 4000 V, L/R = 25 ms
D600SE42C50QF	D079491	4200 V	50 A	184 A ² s	1050 A ² s	1800 A ² s	52 W	103 W	60 kA @ 4200 V, L/R = 15 ms
D600SE42C63QF	E079492	4200 V	63 A	369 A ² s	2100 A ² s	3500 A ² s	57 W	114 W	60 kA @ 4200 V, L/R = 15 ms
D600SE42C80QF	F079493	4200 V	80 A	619 A ² s	3500 A ² s	6000 A ² s	65 W	128 W	60 kA @ 4200 V, L/R = 15 ms
D600SE42C100QF	G079494	4200 V	100 A	1393 A ² s	8000 A ² s	13500 A ² s	70 W	140 W	60 kA @ 4200 V, L/R = 15 ms
D600SE42C125QF	H079495	4200 V	125 A	2949 A ² s	16500 A ² s	28000 A ² s	75 W	147 W	60 kA @ 4200 V, L/R = 15 ms
D600SE42C150QF	V079667	4200 V	150 A	5575 A ² s	31000 A ² s	55000 A ² s	78 W	155 W	60 kA @ 4200 V, L/R = 15 ms

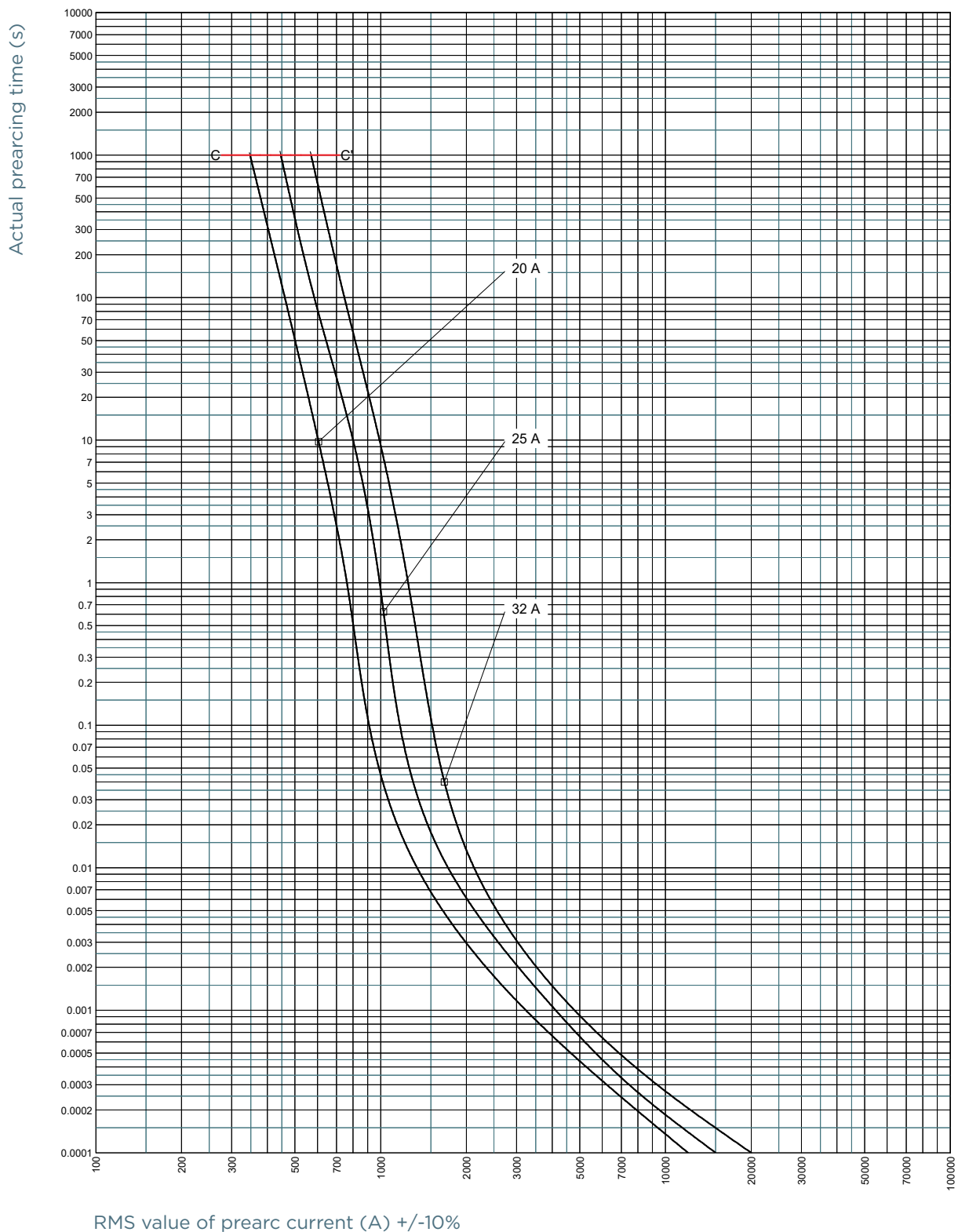
TIME CURRENT CHARACTERISTIC CURVES

3500V aR 10A-16A



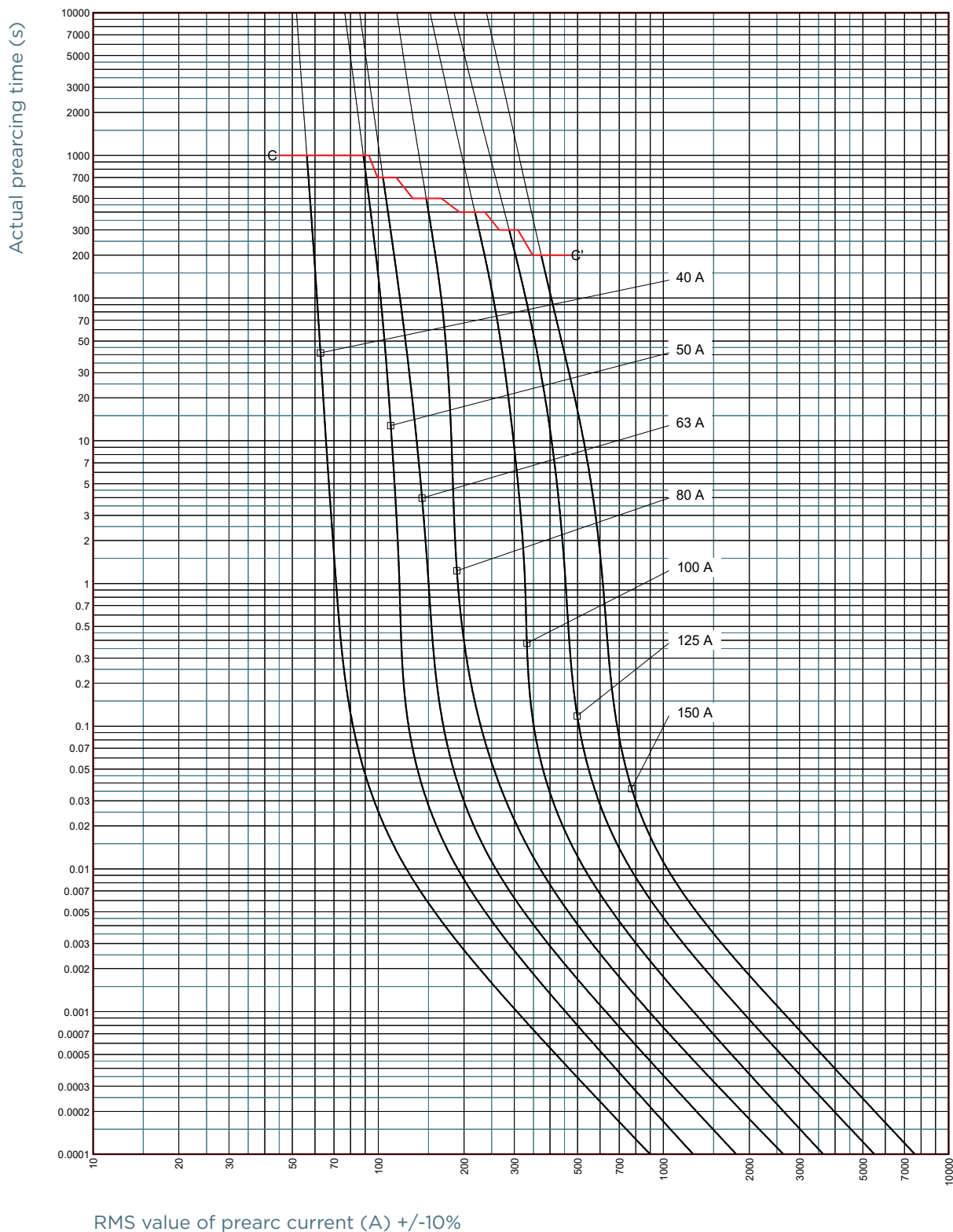
TIME CURRENT CHARACTERISTIC CURVES

4000V aR 20A-32A



TIME CURRENT CHARACTERISTIC CURVES

4200V aR 40A-150A

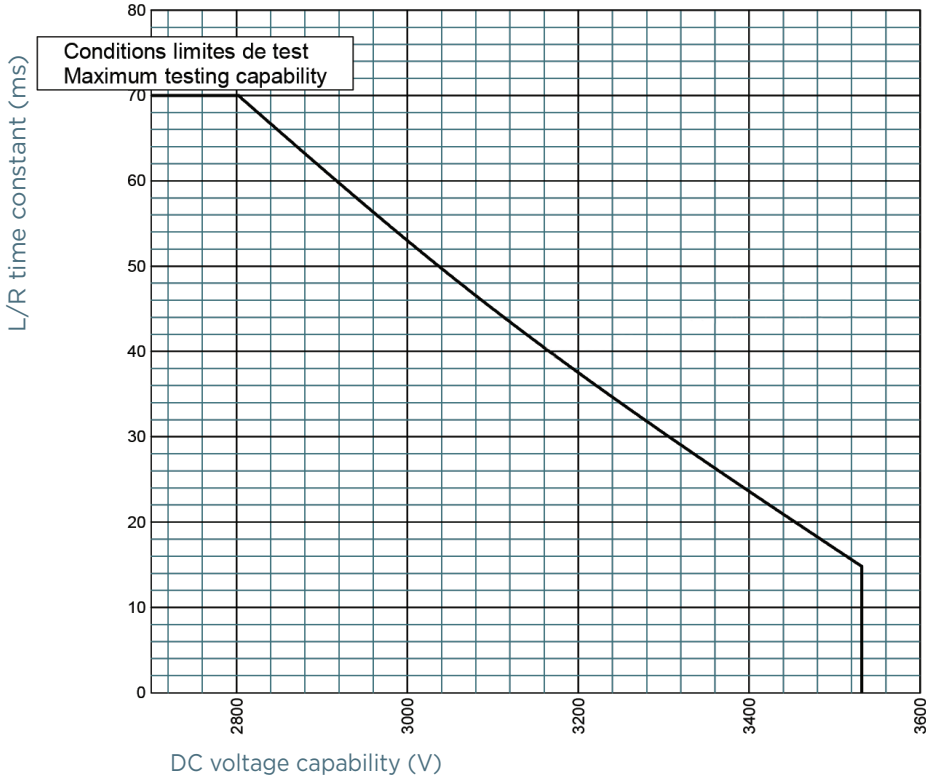


Protistor® size 600 aR

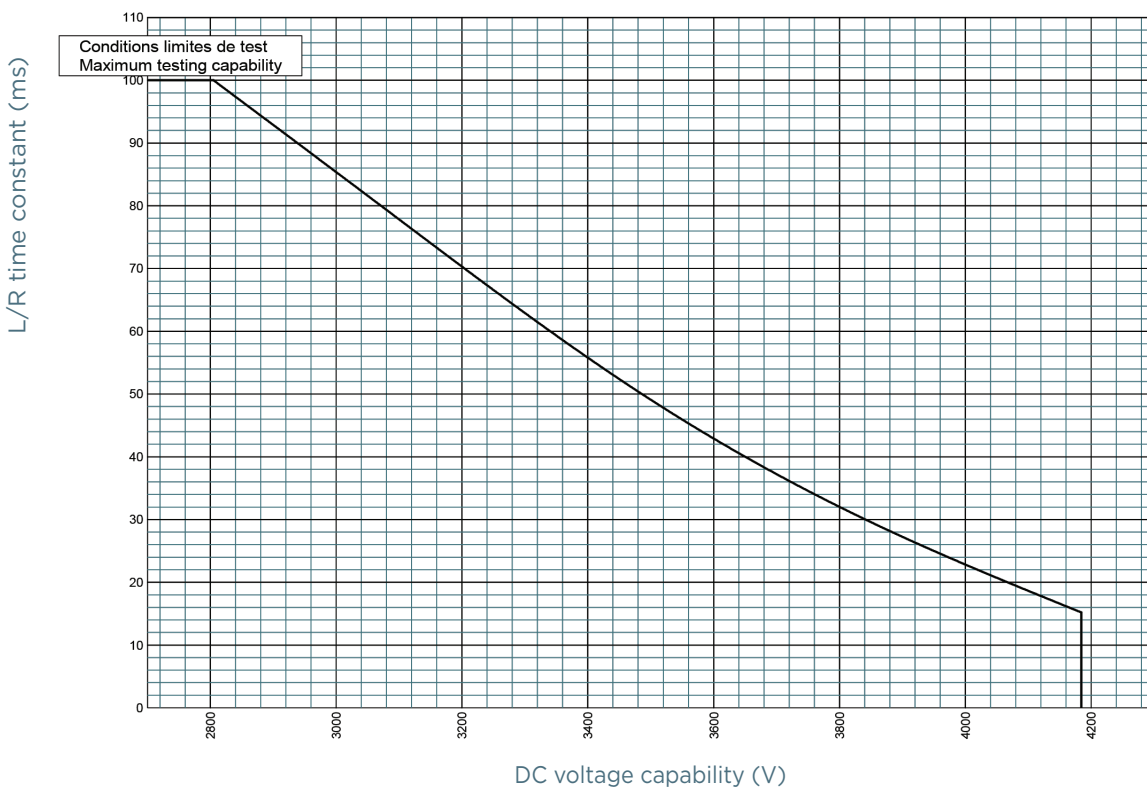
3500 to 4200VDC

L/R TIME CONSTANT VS DC VOLTAGE CAPABILITY

3500V aR 10A-16A

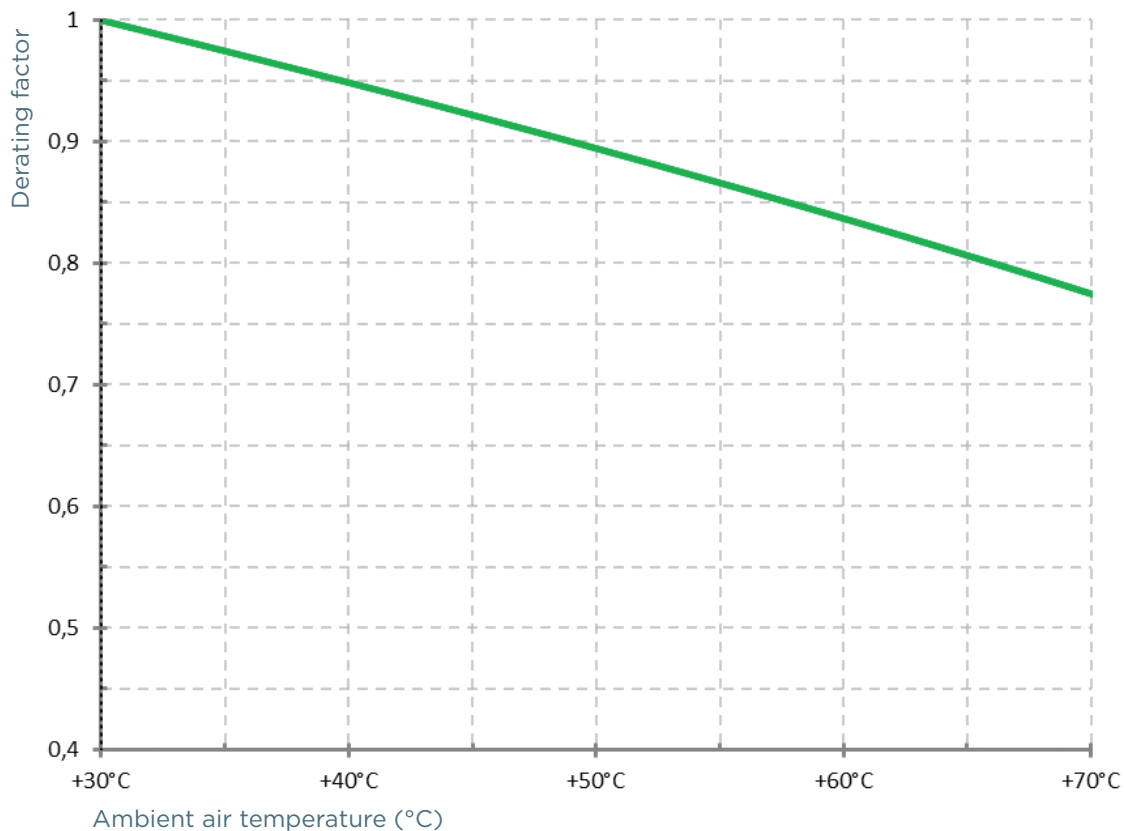


4000V to 4200V aR 20A-150A



TEMPERATURE DERATING

Derating factor of rated current according to ambient air temperature (°C)

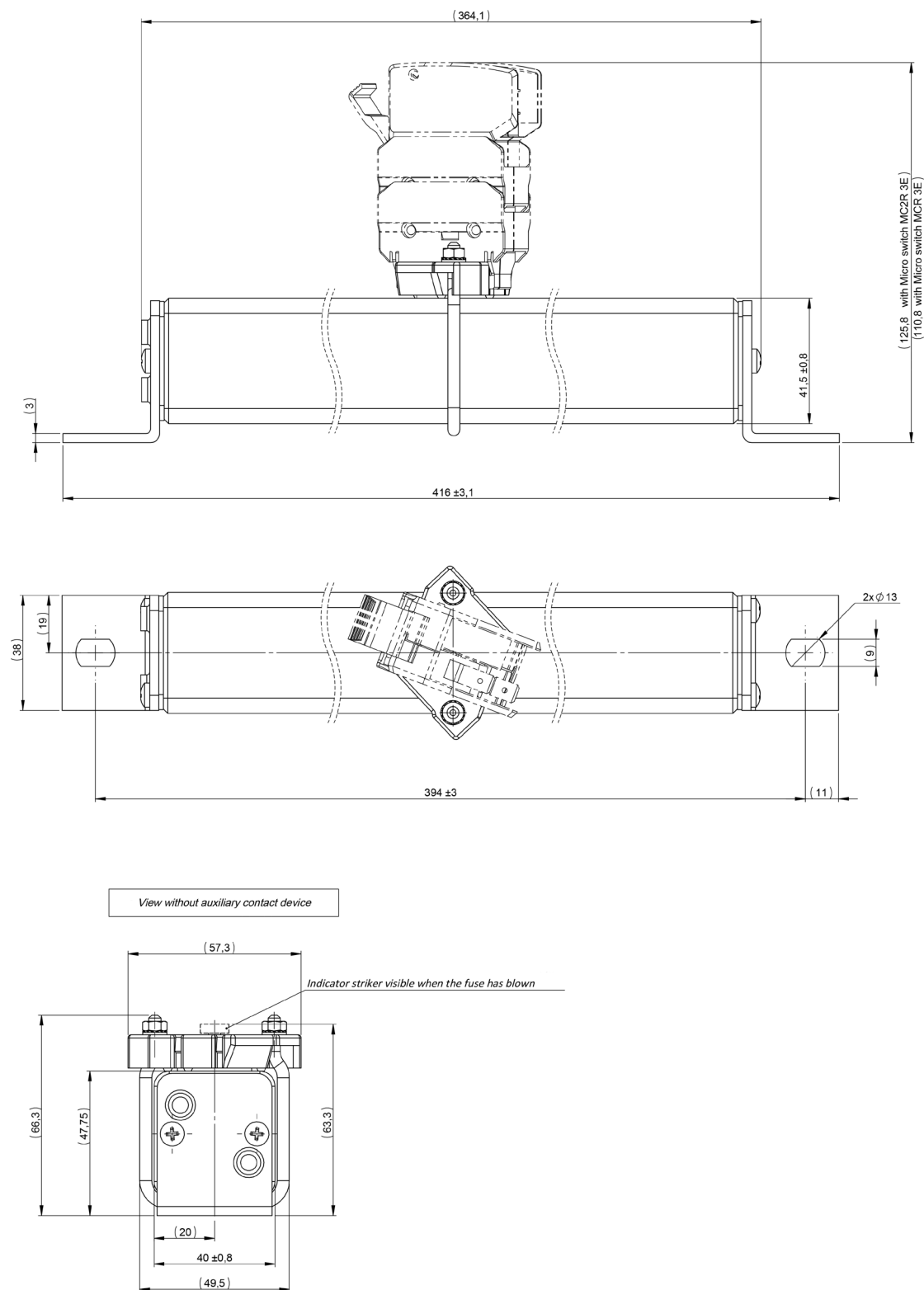


Protistor® size 600 aR

3500 to 4200VDC

DIMENSIONS

Bracket size 600 aR 3500V to 4200V



Dimensions in mm