



MERSEN USA NEWBURYPORT-MA, LLC
374 MERRIMAC STREET
NEWBURYPORT, MA 01950

TITLE
OUTLINE

32B628001

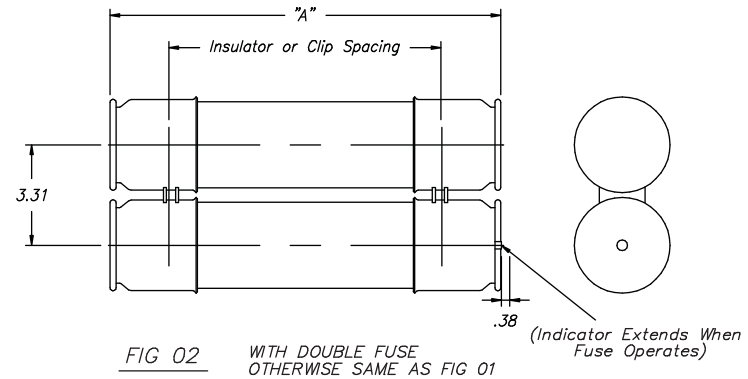
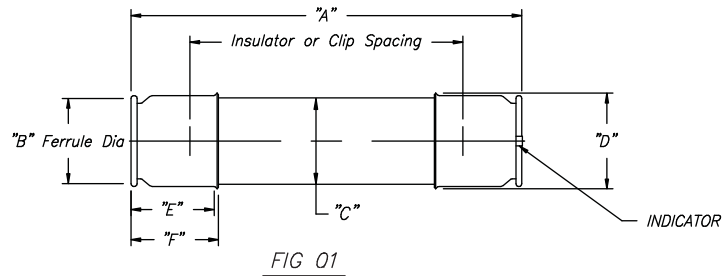
CONT ON SH 2

SH 1

FIRST MADE FOR CPO

EJO-1, C, D & DD FUSES

MODEL NO 9F62***	SIZE	FIG	Clip Spacing	MAX KV	"A"	"B"	"C"	"D"	"E"	"F"	TYPE
HCB	C	01	12	5.5	14.18	2.00	1.86	2.20	2.11	2.20	EJO-1
DCB	D	01	12	5.5	15.88	3.00	2.85	3.25	2.75	3.12	EJO-1
FCB	DD	02	12	5.5	15.88	3.00	2.85	3.25	2.75	3.12	EJO-1
FCH	DD	02	12	6.6	15.88	3.00	2.85	3.25	2.75	3.12	EJO-1
HCC	C	01	12	8.3	14.18	2.00	1.86	2.20	2.11	2.20	EJO-1
DCC	D	01	12	8.3	15.88	3.00	2.85	3.25	2.75	3.12	EJO-1
FCC	DD	02	12	8.3	15.88	3.00	2.85	3.25	2.75	3.12	EJO-1
HDD	C	01	15	15.5	17.20	2.00	1.86	2.20	2.11	2.20	EJO-1
DDD	D	01	15	15.5	18.88	3.00	2.85	3.25	2.75	3.12	EJO-1
FDD	DD	02	15	15.5	18.88	3.00	2.85	3.25	2.75	3.12	EJO-1
MODEL NO 9F60***	SIZE	FIG	Clip Spacing	MAX KV	"A"	"B"	"C"	"D"	"E"	"F"	TYPE
DJB	C	01	12	2.75	14.18	2.00	1.86	2.20	2.11	2.20	EJO-1
FJB	D	01	12	2.75	15.88	3.00	2.85	3.25	2.75	3.12	EJO-1
HJB	DD	02	12	2.75	15.88	3.00	2.85	3.25	2.75	3.12	EJO-1
DJD	C	01	12	5.5	14.18	2.00	1.86	2.20	2.11	2.20	EJO-1
FJD	D	01	12	5.5	15.88	3.00	2.85	3.25	2.75	3.12	EJO-1
HJD	DD	02	12	5.5	15.88	3.00	2.85	3.25	2.75	3.12	EJO-1
DJE	C	01	12	8.25	14.18	2.00	1.86	2.20	2.11	2.20	EJO-1
FJE	D	01	12	8.25	15.88	3.00	2.85	3.25	2.75	3.12	EJO-1
HJE	DD	02	12	8.25	15.88	3.00	2.85	3.25	2.75	3.12	EJO-1
CJH	C	01	12	15.5	14.18	2.00	1.86	2.20	2.11	2.20	EJO-1
DMH	C	01	15	15.5	17.20	2.00	1.86	2.20	2.11	2.20	EJO-1
FMH	D	01	15	15.5	18.88	3.00	2.85	3.25	2.75	3.12	EJO-1
HMH	DD	02	15	15.5	18.88	3.00	2.85	3.25	2.75	3.12	EJO-1
CMJ	C	01	15	25.8	17.20	2.00	1.86	2.20	2.11	2.20	EJO-1



NOTE: DIMENSIONS FOR REFERENCE ONLY

REVISIONS	CPO-V	
	CPO-WEB	
1	25-Aug-82	
2	C. Davis 09-Mar-89	
3	C. Davis 20-July-92	
4	K. Carroll 27-Sept-96	
5	K. Carroll May 24, 2001	
6	C. Pérez May 24, 2001	
7	T. Grant 8/29/01	
Added sheet 2 ECN #K147		
Added: 9F60 List per ECN #K150 & NOTE		
APPROVALS		
MADE BY: R. Prater 22-June-81		
ISSUED BY: K. Carroll 17-November-97		
APPROVALS Kris Ranjan 8/31/01		
32B628001		
CONT ON SH2		
SH 1		